



**Groundbreaking  
simulation solutions**

**FULFILL  
YOUR  
VISION**

## **Ground breaking technology**

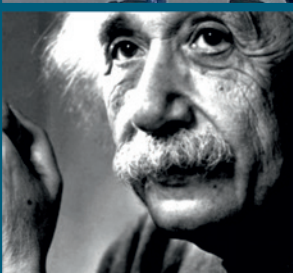
“BETA develops and delivers world class software that has forever changed engineering.”

## **Outstanding services**

“I would like to express my gratitude to the support team for being very helpful and professional.”

## **High business ethics**

“They never promise something they can't deliver.”





**With our**



**Passion**  
for engineering



**Drive**  
for excellence



**Loyalty**  
to clients



**We pioneered the  
Simulation & Analysis  
market by introducing  
automation decades ago.**

**Today, as simulation  
becomes imperative in  
product design and  
development, standing  
by our founding values,  
we are a world leader in  
CAE and we continue to  
amaze with our  
innovative solutions.**





BETA CAE Systems transformed CAE by introducing revolutionary automation software tools and practices into Simulation and Analysis processes almost 30 years ago.

Committed to our mission to enable engineers to deliver results of high value, we continue to offer state-of-the-art, high-performance software and best-in-class services. Our simulation solutions liberate low risk and high Return-On-Investment innovation.

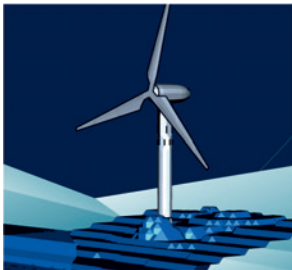
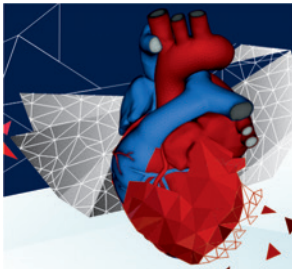
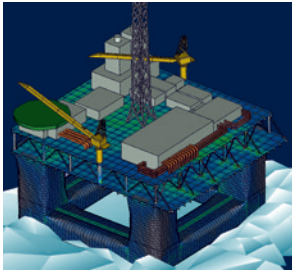
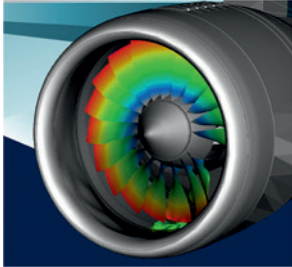
The ground breaking technology, the excellent services and our high standards of business ethics are the three pillars on which BETA was founded and grows since then.

Our passion for engineering, our drive for excellence, and our loyalty to customers and partners, are the key ingredients of our success. We first established our reputation in the Automotive sector and now we are proud of the deployment of our software also in the Aerospace, Defense, Biomechanics, Electronics, Energy and other Industries. Our solutions exceed their requirements in all the simulation disciplines, and allow them to develop the right product, for the right market, at the right time.

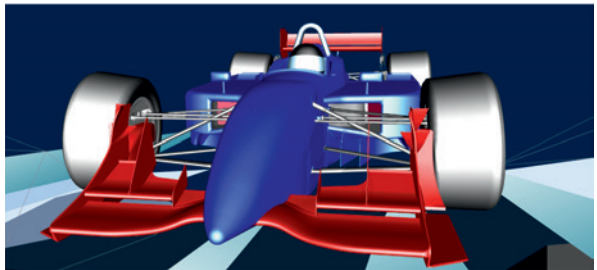
**A wide range of industries is now able to unleash the full benefits of simulation with our solutions, which are developed to cover industry specific challenges.**

**Our solutions enable innovation, and reinforce competitiveness and profitability.**





Aerospace  
Defense  
Automotive  
Motorsports  
Trucks & busses  
Maritime  
Offshore  
Rail vehicles  
Heavy machinery  
Biomechanics  
Electronics  
Industrial equipment  
Robotics  
Powertools  
Energy  
Construction



**Master your data,  
capture your knowledge,  
streamline your  
processes, and  
co-ordinate your  
cross-functional  
resources.**

**Simulation, Process,  
Data & Resources  
Manager  
enables you to  
orchestrate the full  
spectrum of your new  
virtual product  
development  
procedures.**





**“Our CAE process is now  
transparent, systematic, traceable and  
repeatable”**

Addressing the problem of contemporary CAE community to integrate data, processes and resources, BETA brings forth a new solution for driving high quality and efficient virtual product development procedures.

SPDRM provides a simple and intuitive way to capture, deploy, manage and improve simulation workflows by integrating the resources, the tools and the data associated with these.

Reflecting a deep understanding of the demands of simulation and its role in the enterprise, it delivers CAE tasks and associated data to analysts, engineers, designers, suppliers, and managers.

**Hold in hands the front end for data search, navigation and collaboration.**

**Interactively browse, visualize and handle all the CAE data, in a flexible and adaptable manner that fits to your environment.**





**“It’s really the point where data meet with their stakeholders in the context of simulation”**

KOMVOS - SDM CONSOLE is an innovative Simulation Data Management platform for the interactive browsing, visualization and handling of all data related to CAE analysis, from PDM extractions to simulation runs, key results and reports. With user-friendly and intuitive interface, KOMVOS makes it possible to visualize the CAE models, get information about them and initiate data processing tasks.

Being flexible and adaptable, it can be integrated in all CAE environments since it performs equally well with all CAE data management systems. KOMVOS offers a scalable solution ranging from individual engineer to corporate level. This solution serves the function of a powerful front end for data search, navigation and collaboration.

**Choose like a  
leading expert.**

**Take advantage of the  
most complete solution  
for full multivariant  
model build up.**

**Quality, automation,  
performance,  
multidisciplinary nature  
and abundance in  
features and tools, in a  
single environment.**





**“ANSA has proved to be robust and efficient, and enabled us to reach our targets.”**

ANSA is an advanced multidisciplinary CAE pre-processing tool that provides all the necessary functionality for full-model build up, from CAD data to ready-to-run solver input file, in a single integrated environment.

ANSA is the users' preference due to its wide range of features and tools that meet their needs. The list of productive and versatile features is long and the alternative tasks and processes to be completed using them are countless. The data management capabilities and the large number of supported solvers and disciplines enable unique multivariant and multidisciplinary modeling implementations.

Engage with the solver that sets new benchmark standards in performance, accuracy and robustness.

EPILYSIS covers solution types such as Structural, NVH, Optimization and more.

$$\rightarrow \begin{bmatrix} \frac{4EI}{L} & \frac{2EI}{L} & \frac{6EI}{L^2} & -\frac{6EI}{L^2} & 0 & 0 & 1 \\ \frac{2EI}{L} & \frac{4EI}{L} & \frac{6EI}{L^2} & -\frac{6EI}{L^2} & 0 & 0 & 2 \\ \frac{6EI}{L^2} & \frac{6EI}{L^2} & \frac{12EI}{L^3} & -\frac{12EI}{L^3} & 0 & 0 & 3 \\ -\frac{6EI}{L^2} & -\frac{6EI}{L^2} & -\frac{12EI}{L^3} & \frac{12EI}{L^3} & 0 & 0 & 4 \\ 0 & 0 & 0 & 0 & \frac{AE}{L} & -\frac{AE}{L} & 5 \\ 0 & 0 & 0 & 0 & -\frac{AE}{L} & \frac{AE}{L} & 6 \end{bmatrix}$$



# EPILYSIS

SOLVER

**“The most promising  
and dynamically developed solver  
for our contemporary needs”**

EPILYSIS serves as a contemporary solution in the field of Finite Element Analysis, embodying the accumulated knowledge from 30 years of collaboration with the CAE community.

It covers numerous solution types and intends to bridge the gap between pre- and post- processing for disciplines such as Structural, NVH, Optimization, and more.

**Benefit from the striking performance, the full automation capabilities and an easy-to-use toolbox.**

**Take advantage of the powerful platform for handling effectively even the most demanding post-processing tasks, including animations, plots, videos and reporting.**





**“We succeeded in reducing significantly the effort, time and cost required for our procedures until reporting”**

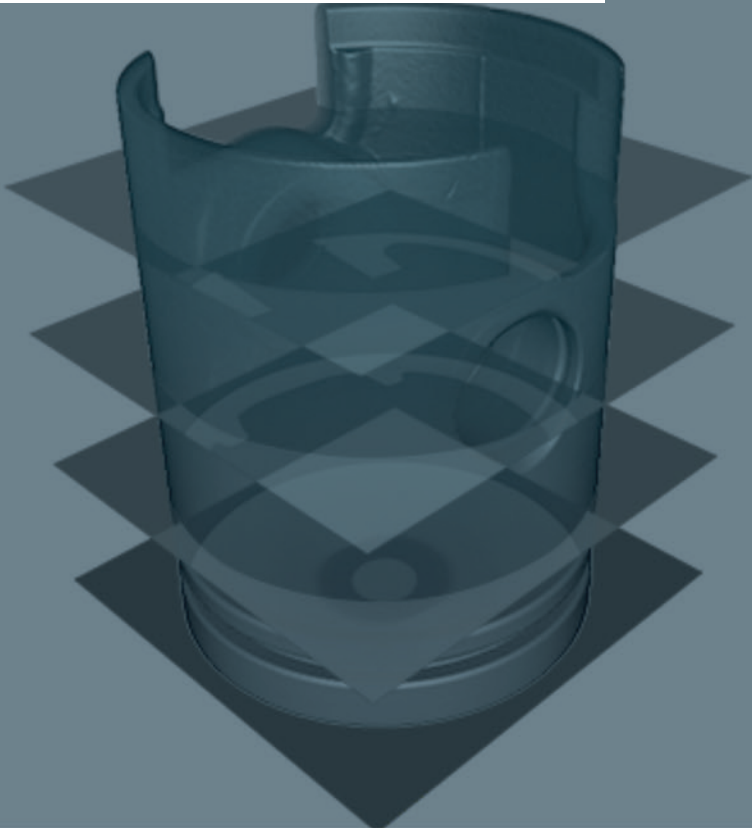
META is a thriving multi-purpose post-processor meeting diverging needs from various CAE disciplines.

It owes its success to its impressive performance, innovative features and capabilities of interaction between animations, plots, videos, reports and other objects.

Its capability for high level of process automation established META as a standard accelerator of post-processing tasks, until report generation.

**Turn the key to 3D-  
modeling from CT-data  
of physical objects.**

**Grasp image data and  
turn them into  
tessellated models,  
ready to be driven to  
further analysis.**





**“Physical objects and simulation data have never been so accurately close”**

Addressing the need of contemporary industry to embed new approaches, such as the integration of Computer Tomography (CT) data into the CAE process, we bring forth RETOMO. This new software couples simulation and physical objects even for high-end complex, multi-material structures.

RETOMO enables the correlation of CT with CAE and CAD data, by applying high-end methods to read, process, reduce, reconstruct and visualize CT images and output them as tessellated models.

**Bring your global teams together with the complete collaboration toolset and virtual environment of Neere.**

**Neere is specially designed and deployed for challenging engineering simulation projects, running around the world.**



# neere

**“Neere brings together  
anyone, anywhere,  
at any time”**

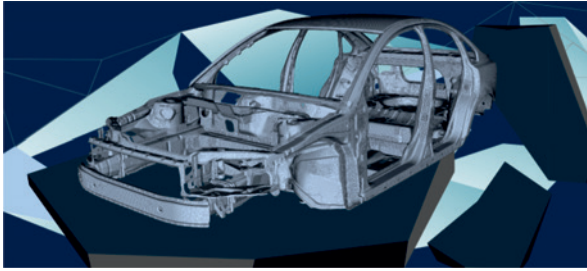
Neere is an innovative collaboration web platform that enables remote teamwork.

It boosts productivity by offering a complete toolset for desktop sharing and cooperation via web browser. Enjoy controlled access to file systems, messaging tools, voice, video calls, and an intuitive yet easy to learn VR environment. All the above provided in such a way that ensures security and trustworthiness.

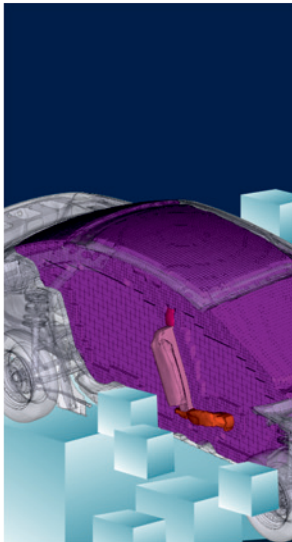
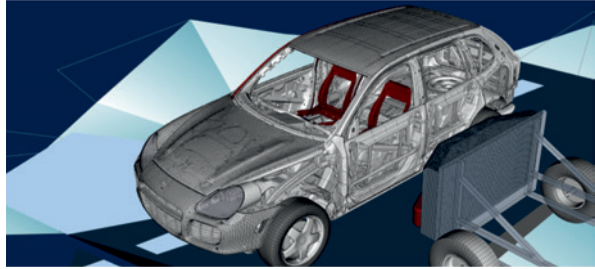
**Be empowered to  
achieve your goals  
for any analysis field,  
in a timely and  
effortless manner.**

**Build common models  
and share them among  
your disciplines.**





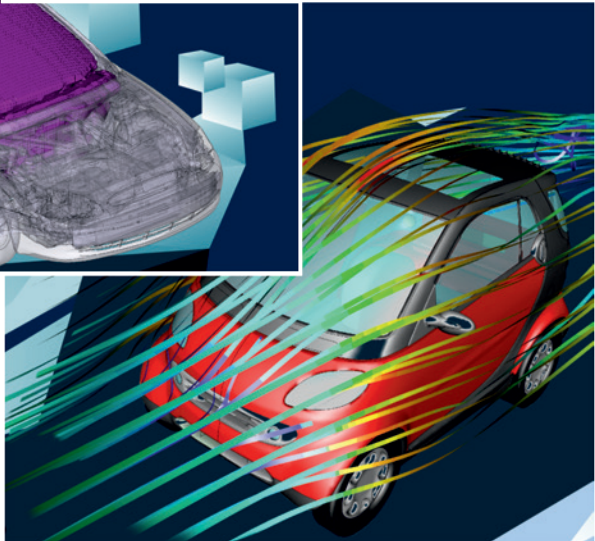
**Durability  
& Fatigue**



**NVH**

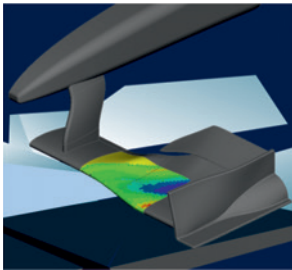
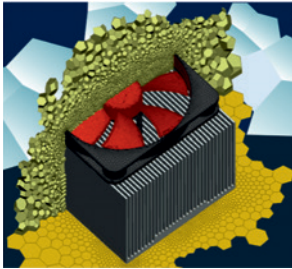
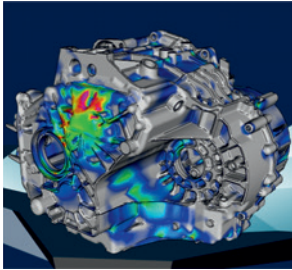
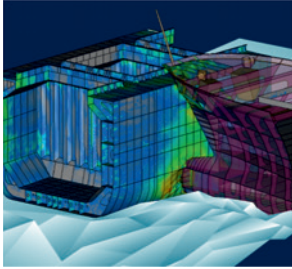
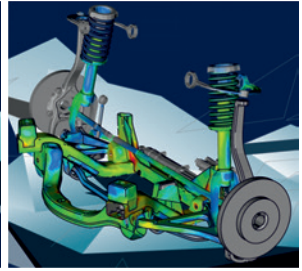
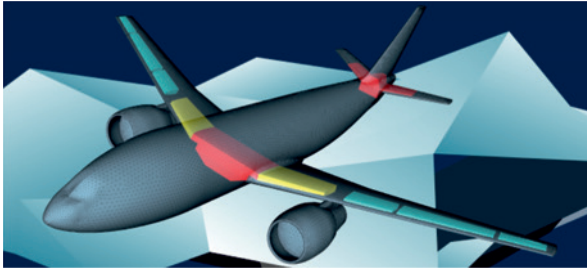
**Crash &  
Safety**

**CFD &  
Thermal**

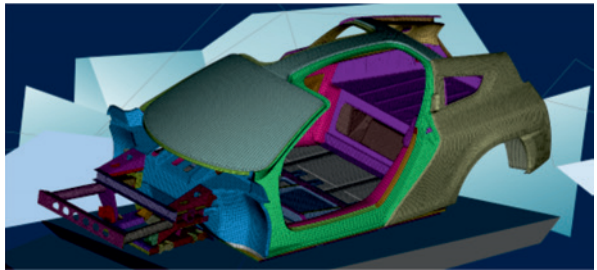


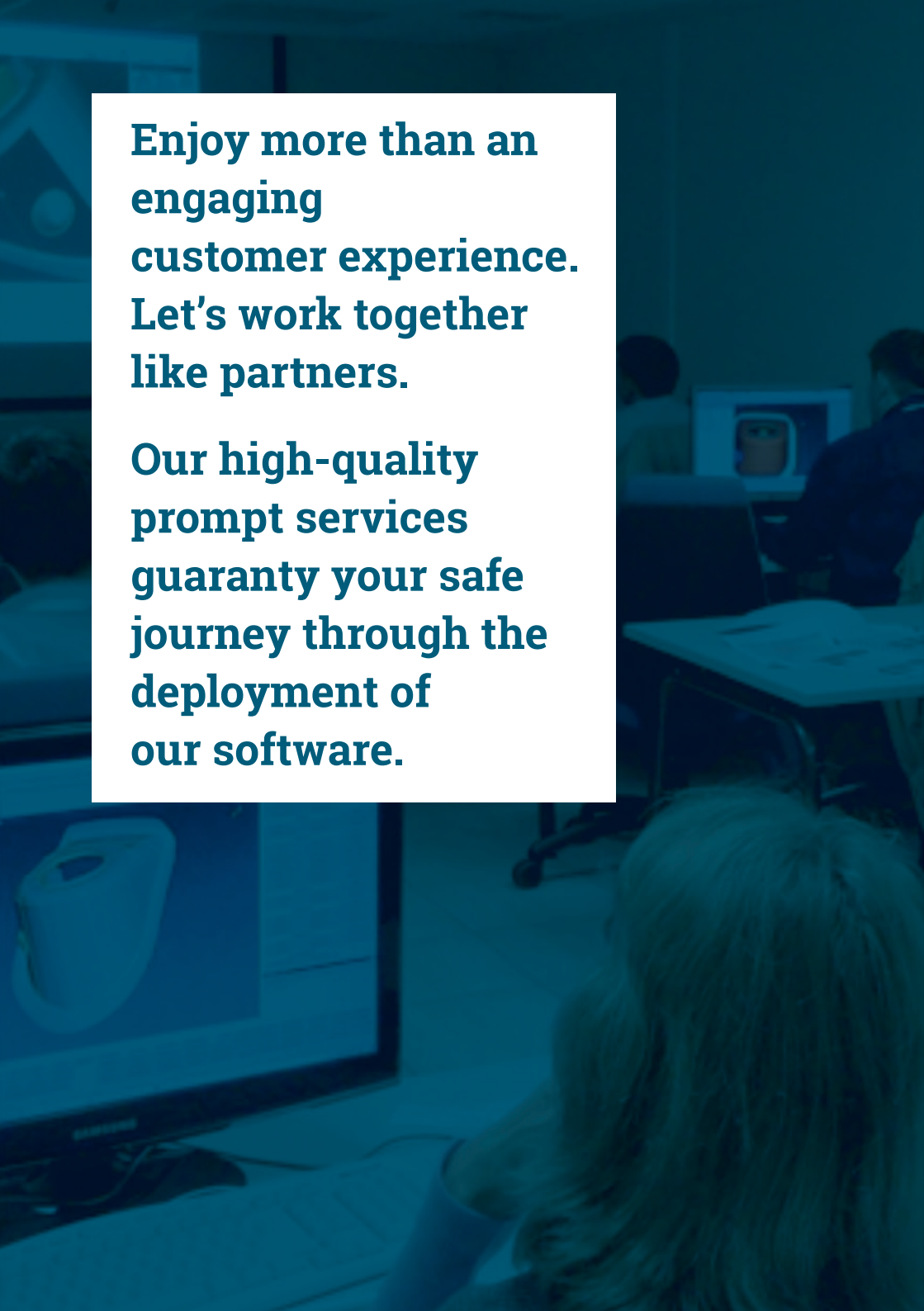
**Find the right path to  
the resolution of your  
simulation challenge.**

**You can skyrocket your  
performance with tools  
in hands, suitable to  
your subject matter.**



Process automation  
Data management  
Multi-body dynamics  
Powertrain  
Fuel tank  
Plastics  
Laminated composites  
Optimization

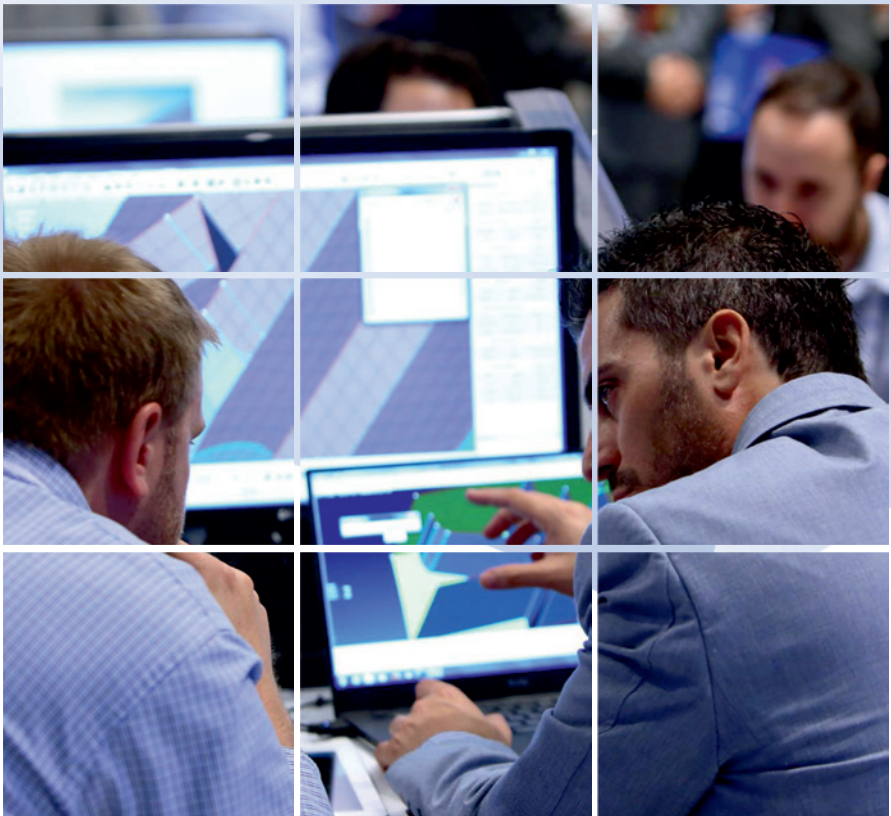




**Enjoy more than an  
engaging  
customer experience.  
Let's work together  
like partners.**

**Our high-quality  
prompt services  
guaranty your safe  
journey through the  
deployment of  
our software.**

**“I am really grateful and impressed  
by the speed and quality  
of your customer service work”**

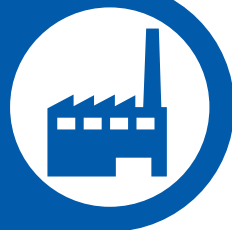


**Rely on us, as an increasing number of innovative products creators do.**

**We always deliver by working with the same motivation, values and quality, and by enriching our team with more talented engineers.**



**2600+**  
**customer sites**



**~10000**  
**installed licenses**



**~500 engineers**  
**at your service**



**discover more**  
**[www.beta-cae.com](http://www.beta-cae.com)**



**contact us**  
**[ansa@beta-cae.com](mailto:ansa@beta-cae.com)**



